



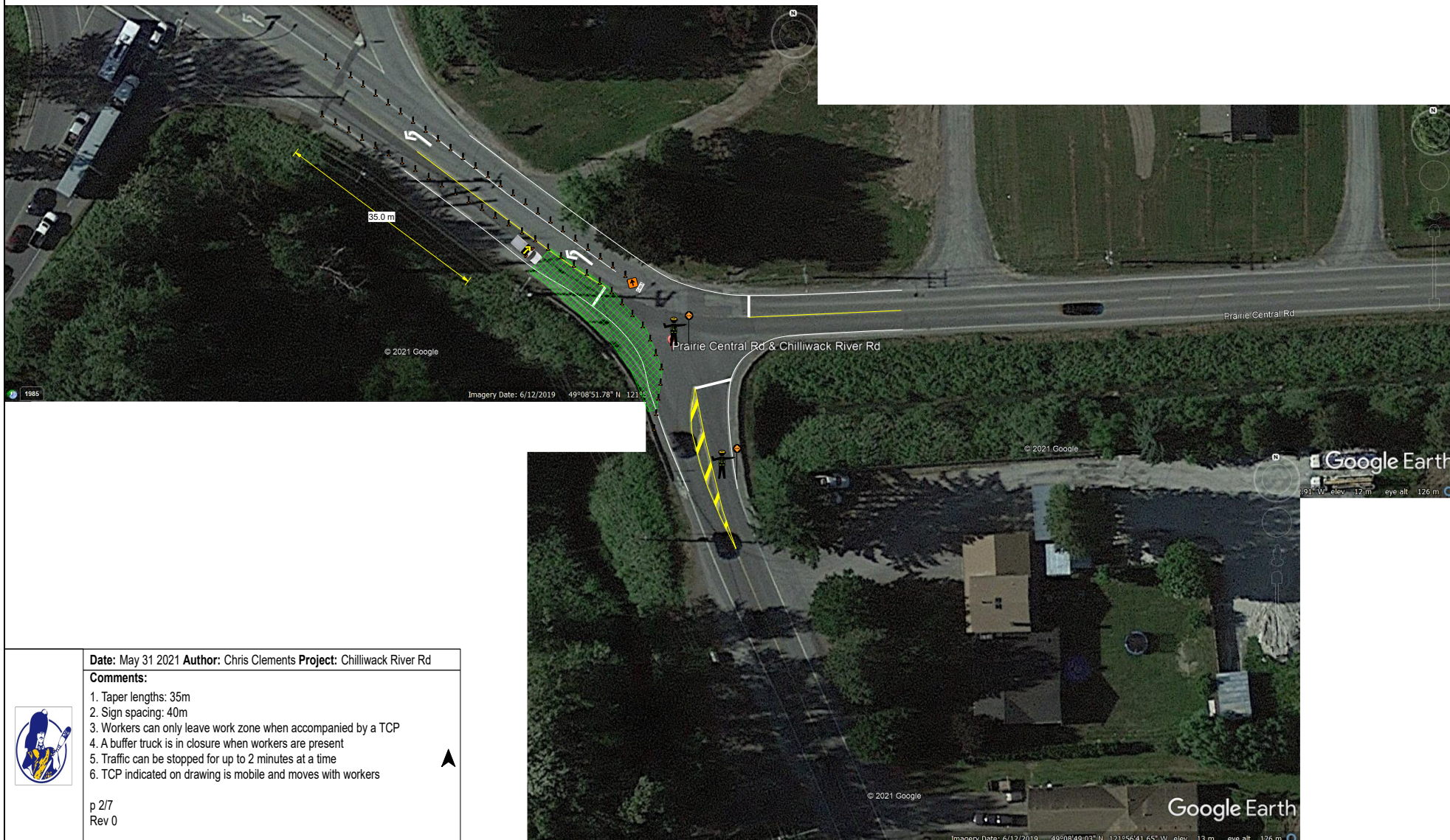
Date: May 31 2021 Author: Chris Clements Project: Chilliwack River Rd

Comments:

- 1. Taper lengths: 35m
- 2. Sign spacing: 40m
- 3. Workers can only leave work zone when accompanied by a TCP
- 4. A buffer truck is in closure when workers are present
- 5. Traffic can be stopped for up to 2 minutes at a time
- 6. TCP indicated on drawing is mobile and moves with workers

p 1/7
Rev 0





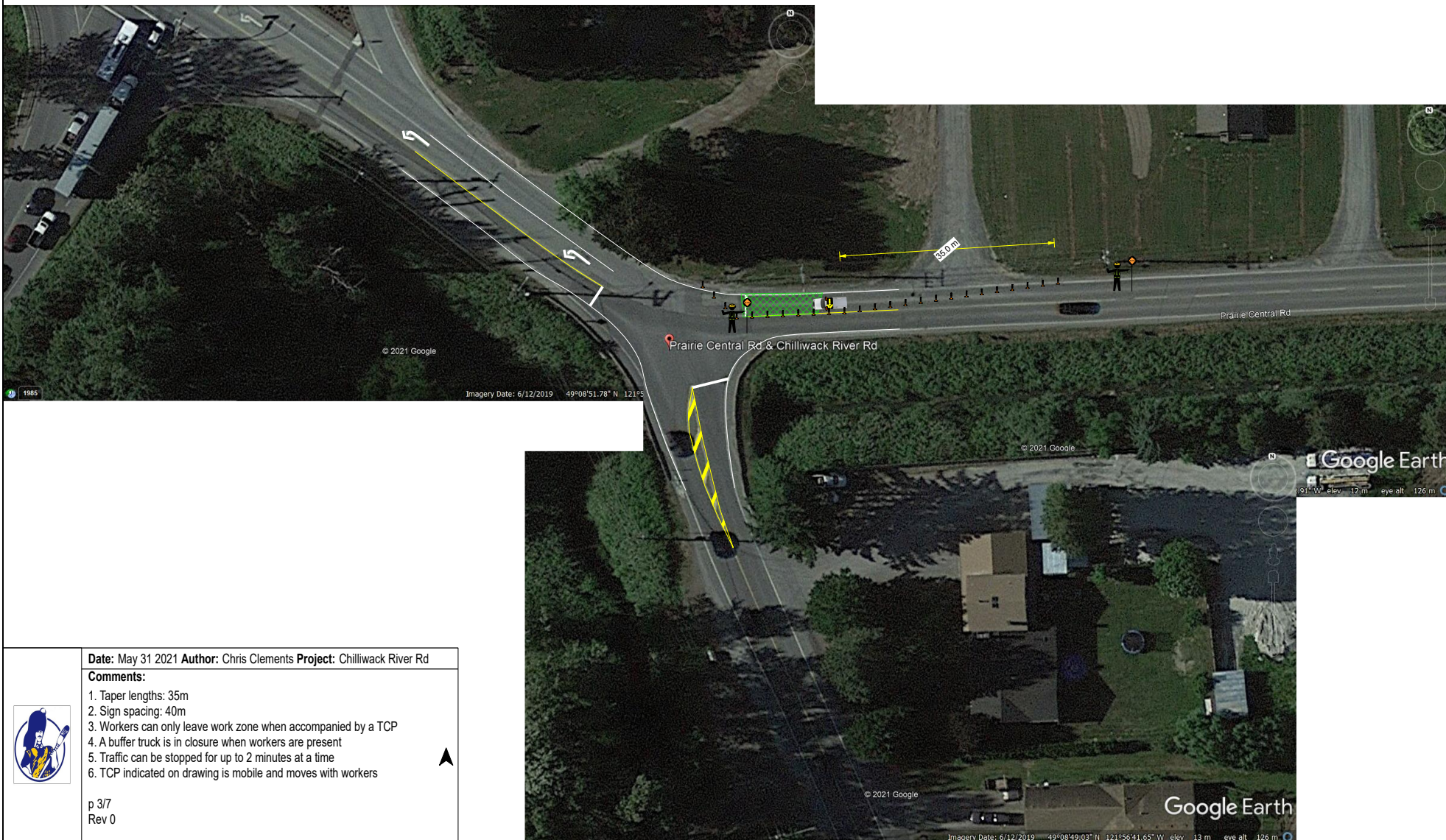
Date: May 31 2021 **Author:** Chris Clements **Project:** Chilliwack River Rd

Comments:

1. Taper lengths: 35m
2. Sign spacing: 40m
3. Workers can only leave work zone when accompanied by a TCP
4. A buffer truck is in closure when workers are present
5. Traffic can be stopped for up to 2 minutes at a time
6. TCP indicated on drawing is mobile and moves with workers



p 27
Rev 0



Date: May 31 2021 **Author:** Chris Clements **Project:** Chilliwack River Rd

Comments:

1. Taper lengths: 35m
2. Sign spacing: 40m
3. Workers can only leave work zone when accompanied by a TCP
4. A buffer truck is in closure when workers are present
5. Traffic can be stopped for up to 2 minutes at a time
6. TCP indicated on drawing is mobile and moves with workers



p 3/7
Rev 0



Date: May 31 2021 Author: Chris Clements Project: Chilliwack River Rd

Comments:

1. Taper lengths: 35m
2. Sign spacing: 40m
3. Workers can only leave work zone when accompanied by a TCP
4. A buffer truck is in closure when workers are present
5. Traffic can be stopped for up to 2 minutes at a time
6. TCP indicated on drawing is mobile and moves with workers



p 4/7
Rev 0



1985

1985


© 2021 Google

Imagery Date: 6

Date: May 31 2021 **Author:** Chris Clements **Project:** Chilliwack River Rd

Comments:

1. Taper lengths: 35m
2. Sign spacing: 40m
3. Workers can only leave work zone when accompanied by a TCP
4. A buffer truck is in closure when workers are present
5. Traffic can be stopped for up to 2 minutes at a time
6. TCP indicated on drawing is mobile and moves with workers



p 5/7
Rev 0



Date: May 31 2021 **Author:** Chris Clements **Project:** Chilliwack River Rd

Comments:

- 1. Taper lengths: 35m
- 2. Sign spacing: 40m
- 3. Workers can only leave work zone when accompanied by a TCP
- 4. A buffer truck is in closure when workers are present
- 5. Traffic can be stopped for up to 2 minutes at a time
- 6. TCP indicated on drawing is mobile and moves with workers



p 6/7
Rev 0

Imagery Date: 6/12/2019 49°07'50.26" N

Imagery Date: 6/12/2019 49°07'54.70" N 121°56'01.71" W elev. 14 m eye alt. 141 m



Date: May 31 2021 **Author:** Chris Clements **Project:** Chilliwack River Rd

Comments:

- 1. Taper lengths: 35m
- 2. Sign spacing: 40m
- 3. Workers can only leave work zone when accompanied by a TCP
- 4. A buffer truck is in closure when workers are present
- 5. Traffic can be stopped for up to 2 minutes at a time
- 6. TCP indicated on drawing is mobile and moves with workers



p 7/7
Rev 0

Imagery Date: 6/12/2019 49°07'50.26" N

Imagery Date: 6/12/2019 49°07'54.70" N 121°56'01.71" W elev. 14 m eye alt. 141 m